



communi*i*cations



**Paladin Tools<sup>®</sup>**  
*First choice.*

**This tool does it all for you!** *It's a complete tool kit that fits in your palm.*

**PowerPlay®**

TELECOM | DATACOMM | ELECTRICAL

- 1 Drywall Punch
- 2 Needle Nose Pliers
- 3 Gripping Pliers
- 4 Large Romex® & Hard Wire Cutter
- 5 Pivoting Handle Cover
- 6 StopLock
- 7 SOG Knife - 1/2 Serrated Blade
- 8 Scissors
- 9 110 PDT Blade with 18/20/22/24 AWG Strippers
- 10 1/4" Socket Drive
- 11 PowerLocks™
- 12 7/16" & 3/8" Nut Drivers
- 13 66 PDT Blade
- 14 #1 Phillips Screwdriver

- 15 #4 Slotted Screwdriver
- 16 Bottle Cap Opener
- 17 Hook
- 18 Spudger
- 19 Drwall Saw
- 20 3-in-1 File
- 21 #6 Slotted Screwdriver

- 22 UTP & Round Cable Stripper
- 23 26-18 AWG Small Terminal Lug Crimper
- 24 12/14/16 AWG & Romex® Strippers
- 25 16-10 AWG Large Terminal Lug Crimper



**SOG** *Developed with legendary knife and tool maker SOG Speciality Knives*



Powerful gripping pliers



Romex® cutter and stripper

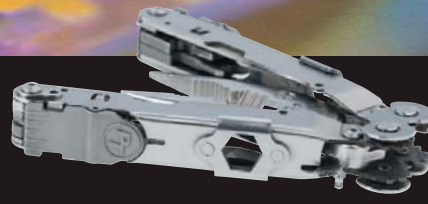


110 Punchdown



1/4" Hex bit driver & adapter

The premium engineering delivers smooth operation — you'll immediately feel the difference....from start to finish.



# Multi-Tools

## PowerPlay® is beyond ordinary!

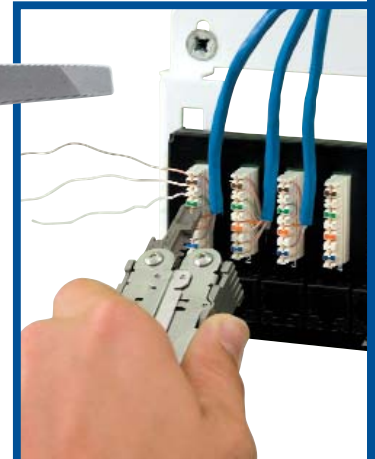
PowerPlay is the only tool designed just for datacomm, telecom and electrical wiring professionals. And it does it all... from start to finish.

- Rough-in outlet boxes with drywall punch and saw
- Cut and strip Romex®, Cat5e and other low voltage wires and cables
- Terminate 110 & 66 blocks with punchdown tools
- Crimp terminal lugs for security and other low voltage
- Patented gear system delivers 2X the power for cutting and stripping
- Effortless one-handed flip-open
- Field-replaceable folding components



PT-525

**New**



### PowerPlay Multi-Tool Family

	PT-540	PT-525	PT-510
110 Punchdown Tool	•	•	•
66 Punchdown Tool	•	•	•
UTP Round Wire Stripper	•	•	•
Extra Large Wire Cutter (up to 10 AWG Romex)	•	•	•
Large Wire Cutter (up to 12 AWG Romex)	•	•	•
Wire Cutter (up to Cat5e UTP cable)	•	•	•
Hard Wire Cutter Notch	•	•	•
18/20/22/24 AWG Wire Strippers	•	•	•
10 AWG Wire Stripper	•	•	•
12 AWG Wire Stripper	•	•	•
14 AWG Wire Stripper	•	•	•
Needle Nose & Gripping Pliers	•	•	•
Drywall Punch	•	•	•
Drywall Saw	•	•	•
24-18 AWG & 18-14 AWG Lug Crimpers	•	•	•
Wire Hook & Spudger	•	•	•
1/4" Socket Drive & Hex Bit Adapter	•	•	•
#4 & #6 Slotted Screwdrivers	•	•	•
#1 Phillips Screwdriver	•	•	•
SOG Serrated Knife	•	•	•
3-in-1 File and Bottle Opener	•	•	•
7/16" & 3/8" Nut Drivers	•	•	•
Ruler & Lanyard	•	•	•
Pivoting Handle Covers for comfortable grip	•	•	•
Powerlock™ locks components in place while in use	•	•	•

### Compound Leverage™ System:

- Patented by SOG Specialty Knives, Compound Leverage™ generates double the gripping and wire cutting power than all other multi-tool designs.
- The special geared design creates greater leverage and smoother handle movement than ordinary multi-tools.
- Minimizes the amount of hand force required for maximum torque.



Compound Leverage™ Gear System

# Cut & Strip



900265

**KT 8 precision cutter** for solid, stranded & flexible cables of soft copper and aluminum. Precise & effortless cuts. Perfect cutter for coax & UTP cables; doesn't deform cable when cut. Cuts up to 6 AWG (16 mm<sup>2</sup>).

P/N 900265



900256

**KT 35 ratcheted cutter** for large utility & power cables – solid, stranded & flexible soft copper and aluminum – features soft, rubber-embedded handles. Made from hardened, precision steel cutting blades for long-life. Smooth ratcheting for one-hand operation. Cuts up to 500 MCM (240 mm<sup>2</sup>) cable or diameter of 1.4" (35 mm).

P/N 900256

**AM 25, 35 & Universal Professional Slitters** – are the *original* tools designed for slitting PVC & THHN insulation from round cables! Blade swivels for circular, longitudinal, & spiral cuts. Great for corrugated aluminum armor cables and mid-point taps or window slits.

P/N 1820 AM 25 for cables less than 1"

P/N 1821 AM 35 for cables 1.0-1.4"

P/N 1822 Universal Slitter for .18-1.4" diameter cable



1820



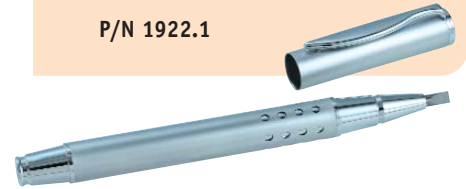
1511

**Kevlar® Cutter** for strands in fiber optic cable. Features hard-chromed serrated edge steel blades.

P/N 1511

**Pen-type fiber optic scribe** with screw-in, non-reversible carbide tip and pocket clip.

P/N 1922.1



**Aluminum polishing pucks** with tungsten coating for polishing fiber optic connectors. Leave less debris and double the life of plastic pucks.

P/N 1920.1 - SC, ST & FC type

P/N 1926.1 - LC type



**FiverOptic™** – multi-functional fiber optic stripper strips 2.0–2.4 mm fiber and 2.8–3.0 mm fiber outer jackets; 2.0–3.0 mm loose tube fiber; 900 μm buffer from loose buffer fiber without removing acrylate, and buffer and acrylate from 900/125 μm and 250/125 μm fiber. Optimum ergonomic design prevents awkward wrist bends & handles are rubber-embedded for additional comfort.

P/N 1163

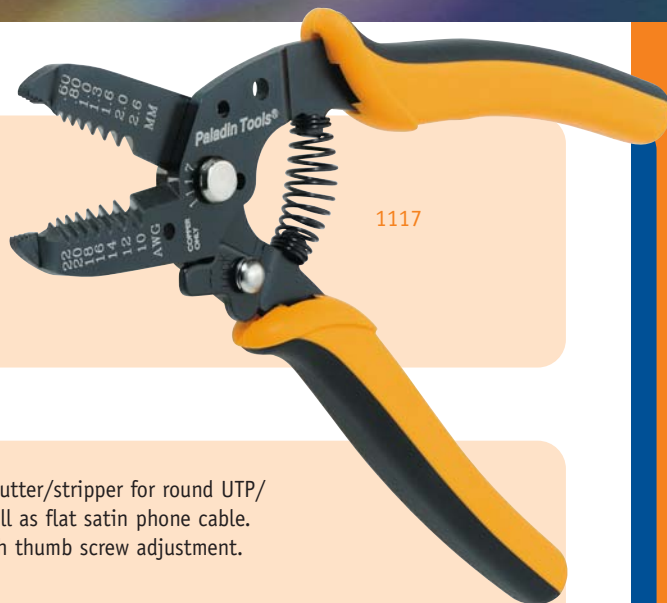


1163

**GripP Strippers** – combine ergonomics & versatility! Head of tool and handles designed at optimum angle to prevent awkward wrist bends. Precision ground for non-scoring strips and smooth wire cuts. Works with solid or stranded wire. Features screw cutter, built-in wire loops and gripping jaws.

P/N 1117 - 22-10 AWG including Romex® (.34–6 mm<sup>2</sup>)

P/N 1118 - 30-20 AWG (.05–.5 mm<sup>2</sup>)



1117

1116

**Data SureStrip®** adjustable cutter/stripper for round UTP/STP voice and data cables as well as flat satin phone cable. Easily change cutting depth with thumb screw adjustment.

P/N 1116



**SureStrip™ for Smart Home Installations**

professional all-in-one cutter/stripper for coax & twisted pair cables. Coax pre-set for 2-level compression “F”, RCA & BNC & hex crimp cable TV “F” strips. Thumb screw adjusts stripping blade depth for UTP/STP insulations. Blade self-regulates to prevent nicks.

P/N 1119

**New**



**CST Series Coax Strippers** – are designed for the professional and are the standard for the broadcast industry. Blade cassettes and memory blocks interchange quickly & easily to change from one application to another. Cam adjustment ensures precise hold on cable without distorting jacket.



1248

Complete Tool	Cassette Only	Preset Strip Lengths (inches)	Common Uses
P/N 1240 - CST Green	2240	.279 braid; .201 dielectric	Common 2- & 3-piece BNC/TNC
P/N 1241 - CST Blue	2241	.256 braid/dielectric	CATV “F” connectors
P/N 1247 - CST Orange	2247	.327 braid; .146 dielectric	Kings, Amphenol HDTV connectors
P/N 1248 - CST Black	2248	.344 braid; .094 dielectric	ADC, Amphenol HDTV connectors
P/N 1245 - CST Frame pre-set for Belden 179DT			
P/N 2245 - Memory cartridge only			

**LC CST Series Coax Strippers** – combine high-performance and ergonomic design at an affordable price. Easily remove the outer jacket, shield braid and inner dielectric in a single step. Pre-set strip lengths for common connectors.



1255

Complete Tool	Preset Strip Lengths (inches)	Strip Types
P/N 1255 - RG58/59/62 cable	.315 OJ, .157 ID	2- or 3-level
P/N 1256 - RG8/11/213	.315 OJ, .157 ID	2- or 3-level
P/N 1258 - RG178, 735A, Belden 8218 & other small cable	.344 OJ, .094 ID	2- or 3-level
P/N 1257 - RG59/6/6 Quad	.236 OJ	2-level - preset for CATV “F”

Note: OJ = outer jacket ID = inner dielectric

**Crimp & Terminate**

## GripPack Quick-Release Tool Holster & Kit

**Get a Grip!** The rugged GripPack Quick-Release Tool Holster was designed with specific needs of installers in mind and the rugged design is tough enough for every day use and longevity.

Punchdown Tool	110/66 Blade	Data SureStrip®	Scissors	Sharpie®	Mini-MagLite™	Detachable LED Light
----------------	--------------	-----------------	----------	----------	---------------	----------------------

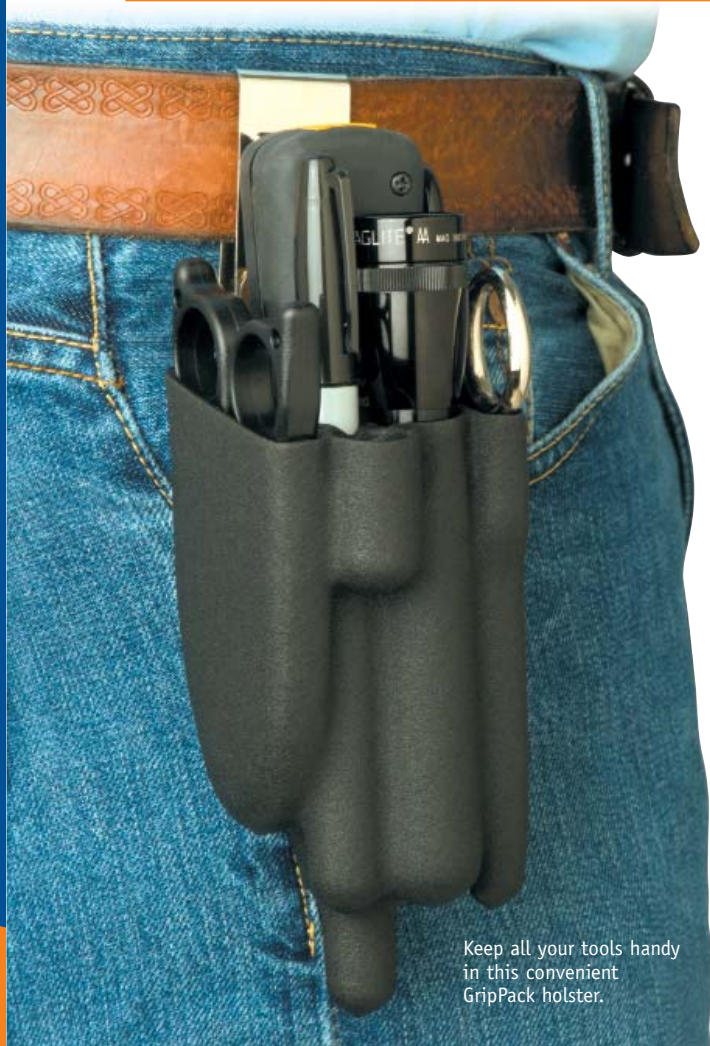
### Premium Technician's GripPack Kits

P/N 4941	SurePunch® Pro	•	•	•	•	•	
P/N 4943	SurePunch®	•	•	•	•	•	

### Basic Installer's GripPack Kits

P/N 4942	SurePunch® Pro	•	•	•			•
P/N 4944	SurePunch®	•	•	•			

P/N 4940	GripPack Tool Holster (no tools included)
----------	---

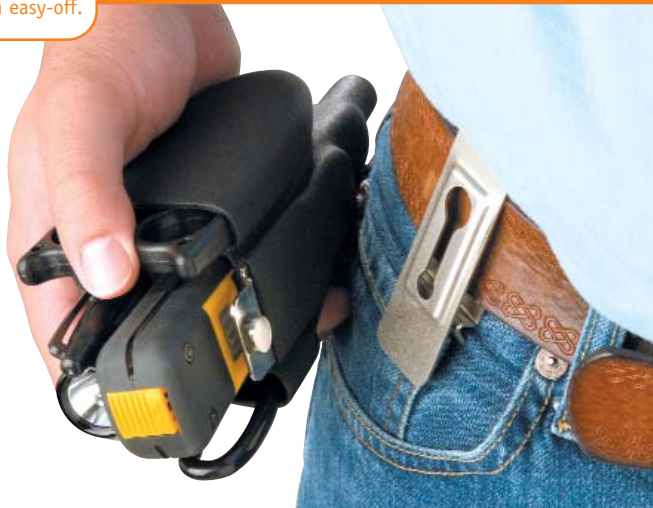


Keep all your tools handy in this convenient GripPack holster.



Form-fitted PVC material ensures tools don't fall out!

Quick-release belt clip for easy-on easy-off.



**SurePunch® Pro Series Punchdown Tools** – *The new industry standard in impact punchdown tools* – the first & only with a detachable light! The most efficient & comfortable tool available offers true ergonomic design with an advanced spring mechanism requiring less hand force. Also features a non-slip rubber-embedded cushioned handle and retractable hook, spudger and slitting tooth. Terminates 23 AWG Cat-6 in a single punch. Blade storage in handle with latch cover. Uses all twist-&-lock-style blades.

- P/N 3590 - SurePunch® Pro Handle & Light
  - P/N 3584 - SurePunch® Pro with Double 110 & Light
  - P/N 3588 - SurePunch® Pro with 110/66 Blade & Light
  - P/N 3596 - SurePunch® Pro with 110 Blade & Light
  - P/N 3598 - SurePunch® Pro with BIX™ & Light
  - P/N 3599 - SurePunch® Pro with Krone® LSA Blade & Light
  - P/N 4599 - SurePunch® Pro detachable LED Light
- SurePunch® Pro tools also available without light



3584



**Upgraded patented Double-110/110 Blade**

terminates pairs into 110 jacks & panels with .150" (3.81 mm) spacing. Blade now reverses to single 110. Fewer punches increases productivity, reduces hand fatigue and labor costs.

**SurePunch® Series Punchdown Tools** – Impact punchdown tools with ergonomic design. Features cushion grip with comfortable latch cover blade storage in handle. Increased HI/LO impact force for new cable types & wire sizes, including Cat-6. Uses all twist-and-lock-style blades.

- P/N 3570 - SurePunch® PDT Handle
- P/N 3571 - SurePunch® PDT with 110/66 Blade
- P/N 3572 - SurePunch® PDT with 110 Blade
- P/N 3575 - SurePunch® PDT with Krone® LSA Blade
- P/N 3574 - SurePunch® PDT with BIX™ Blade
- P/N 3576 - SurePunch® PDT with Double - 110 Blade



3572

**Blades for SurePunch® and SurePunch® Pro**

- P/N 4571 - 110/66 Blade
- P/N 4572 - 110 Blade
- P/N 4573 - 66 Blade
- P/N 4574 - BIX™ Blade
- P/N 4575 - Krone® LSA Blade
- New** P/N 4591 - Double 110/110 Blade



3560

**ProPunch® 110 Multi-pair Punchdown Tool** – Terminates & cuts up to 5-pairs of data/voice cable at the same time – fewer punches saves time! Smooth operation & rugged, comfortable handle. Delivers more than one and a half more times the force of others on the market. Cat-6, 23 AWG compatible.

Complete Tool	Replacement Head
P/N 3560 – ProPunch® 110 with 5-pair head	P/N 4560
P/N 3561 – ProPunch® 110 with 4-pair head	P/N 4561



## Crimp & Terminate



**8000 Series – Ergonomic crimper** that uses the same dies as the 1300 Series. Easiest crimper on the market to use – crimp with one hand effortlessly. Ultra-smooth ratchet design, rubber grip handles with reduced grip distance. Over 50 interchangeable die sets available.

P/N 8000 – Frame only

### 1300 Series - The original crimp frame

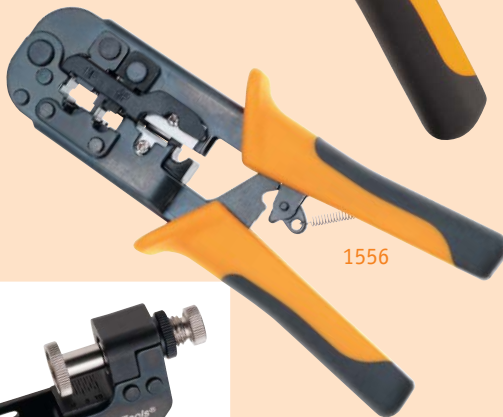
with interchangeable die sets. Ratcheted crimper with quick change EZI-CHANGE™ die screws. Precision crimping at an affordable price.

P/N 1302 – Frame only



**1600 Series - Premium crimper** for superior quality & reliability making it the most widely used tool amongst broadcast installers. Precision-calibrated crimp profiles. Smallest grip hand tool with longest life span available.

P/N 1600 – Frame only



### All-in-One Data & Phone Tools

cut, strip & crimp *round and flat cables* for RJ45, RJ11/12 & RJ22 modular plugs. Ratcheted design.

P/N 1556 for WE/SS-style  
P/N 1557 for AMP-style plugs



**All-in-One Pro Data & Phone Tools** cut, strip & terminate cable for 4-, 6- and 8-position RJ22, RJ11/12 and RJ45 modular plugs. Fully ratcheted with comfortable, rubber-embedded handles.

P/N 1530R for WE/SS-style  
P/N 1540 for AMP-style



### SealTite® Pro Crimper –

easily crimps *all* compression connectors with a *single* tool! Head reverses to accommodate CATV “F”, BNC & RCA connectors eliminating need for additional attachments. Thumb screw adjusts crimp height. Advanced ratchet system & comfortable rubber-embedded handles.

P/N 1555





## 1300 and 8000 Series Crimpers & Die Sets

8000 Series Tool & Die	1300 Series Tool & Die	Die Set Only	Connector/ Cable Type	Crimp Sizes	Connector Manufacturer or Comments
<b>Unshielded Twisted Pair (UTP)</b>					
8030	1307	2061	RJ45 - 8P8C (8 Pin)		Western Electric (WE)/ Stewart Connector (SS)
8031	1340	2062	RJ11 & RJ12 - 6P6C, 6P4C, 6P2C		Western Electric (WE)/ Stewart Connector (SS)
8033	1342	2064	RJ45 - 8P8C (8 Pin)		AMP (Tyco) Inc.
8034	1343	2065	RJ11 & RJ12 - 6P6C, 6P4C, 6P2C		AMP (Tyco) Inc.
8045	1387	2687	RJ45 & CATV "F" - UTP & RG6/6QS	.360/.324 HEX 9.1/8.3 mm HEX	WE/SS-style RJ45
<b>UTP and Coaxial</b>					
8045	1387	2687	RJ45 & CATV "F" - UTP & RG6/6QS	.360/.324 HEX 9.1/8.3 mm HEX	WE/SS-style RJ45
<b>Coaxial</b>					
8001	1317	2034	BNC/TNC - RG58/59/62AU	.256/.213/.068" HEX 6.5/5.4/1.7 mm	Common 2- & 3-piece BNCs
8045	1387	2687	RJ45 & CATV "F" - UTP & RG6/6QS	.360/.324 HEX 9.1/8.3 mm HEX	WE/SS-style RJ45
8003	1367	2649	HDTV BNC/TNC & CATV "F"- RG59, 6 & Belden 8281, 1694A	.324/.255/.068" HEX & .052" SQ 6.5/5.0/4.5/1.7 mm HEX & 1.0 SQ	Kings, ADC, Amphenol
8005	1363	2653	SMA, SMB, Mini-59 BNC/TNC, Mini-UHF	.128/.213/.197/.178/.068" Hex & .042" SQ 3.2/5.4/5.0/4.5/1.7 mm HEX & 1.0 SQ	Common connectors
8049	1389	2699	HDTV BNC/TNC - Belden 1505A, 1855A, 1694A, RG59, NT735, AND RG174	.041/.068/.178/.255/.278 HEX 1.0/1.7/4.5/6.5/7.0 mm	Universal - Kings, ADC, Trompeter, Switchcraft
<b>Fiber Optic</b>					
8017	1362	2652	SMA, SMB, SFR, ST, SC	.128/.151/.215/.197/.178" HEX 3.2/3.83/5.46/5.0/4.5 mm HEX	Universal
8037	1369	2669	SC, FC-3	.120/.137/.090 RND 3.05/3.48/4.83 mm RND	3M
8039	1375	2685	LC, ST, FC, MT-RJ, SC	.151/.178 HEX/LC RND/.190 RND 3.83/4.5 HEX/LC RND/8.83 mm RND	Lucent & Krone, 3M, Universal
8050	1390	2695	SC	2.0/2.5/3.0 mm RND SC	AMP (Tyco) Inc.

## 1600 Series Crimpers & Die Sets

1600 Series Tool & Die	Die Set Only	Connector/ Cable Type	Crimp Sizes	Connector Manufacturer or Comments
<b>Fiber Optic</b>				
1614	2664	SMA, SMB, FC Biconic, SC, ST	.213/.178/.151" HEX 5.41/4.52/3.83 mm	
1668	2668	SC & ST	.120/.137/.190" RND 3.05/3.48/4.83 mm	3M, Suncall, Fiber Source
<b>Coax Cable</b>				
1617	2005	BNC/TNC - RG58/59/62AU, Belden 8281	.256/.213/.068" HEX 6.5/5.4/1.7 mm	Common 2- & 3-piece BNCs
1609	2660	BNC/TNC - Belden 8281 & 7505	.324/.068" HEX & .042" SQ 8.2/.1.7 mm HEX & 1.0mm SQ	Kings, ADC, Switchcraft, Amphenol HDTV
1669	2683	BNC/TNC - Belden 1855, 1505 & 1694	.278/.255/.178/.041" HEX	Universal die for all HDTV

**PC Cable-Check™ Pro** – This powerful troubleshooting tool maps the pin-out, detects good connections and any opens, shorts or crosses in the cable. It now tests over 20 different patch cables including: LAN & telephone, Serial, coax, USB, VGA, Mini-USB, S-video, FireWire, PS/2 keyboard and parallel printer. It now features auto test or manual modes and auto-off to extend the battery life. The case is more rugged, has a built-in handle for easy transport and includes rubber feet to grip to desk or bench to prevent slipping. 9V battery included.

P/N 1577



1577



1573

**Tone Generator and Tone Probe Plus Cable-Check™** is a combination RJ45 LAN tester and tone generator and tone probe cable tracer. It maps the cable and identifies connector and cable pin-out. The unit also provides full-range continuity testing, line condition, signal tracing and wire identification. Carrying case and patch cords included.

P/N 1573

**Data/Link ID and Cable-Check™** is a multi-purpose continuity tester and network identifier. Cable-Check maps cable for both data and telephone connection schemes. The Data/Link ID identifies data and link transmission speeds along with PC and Hub transmissions and link pulses. Carrying case, patch cords and batteries included.

P/N 1576



1576

**New**



1578

**SoHo Cable-Check™** quickly and easily tests RJ45 and cable TV "F" smart home installations. It works on installed cable runs and patch cords to test continuity and identify good connections, open and shorts. Includes patch cords, 75-ohm male "F" terminator, "F" female adapter, battery and carrying case.

P/N 1578

**LAN ProNavigator®** is a network data and coaxial continuity tester with test results at both ends. Simple PASS/FAIL test results in one second! Identify opens, shorts, crosses and split pairs with Fault Check function. Generates oscillating tone to trace wires with your speaker probe. Auto-off to conserve battery power. 9V battery, belt clips and patch cords included.

P/N 1543



1543



**LAN ProNavigator® Kit** also includes coax patch cords, adapters and coupler in a blow-mold case complete with form-fitting foam.

P/N 901066

901066

## FIBERFISH

**FIBERFISH** are non-conductive 3/16" fiberglass rods available in 3' or 6' sections. The rods screw together to make longer lengths for fishing wire in existing walls, attics or across drop ceilings and under carpet. Each kit includes a bullnose tip - other attachments available separately. Easy to use for beginners or professionals.

P/N 1752 6' Rod Kit (5 rods)

P/N 1765 3' Rod Kit (8 rods)

1765



1753

**FiberSnake** is designed specifically for use in conduit and is made from fiberglass reinforced composite core with rugged plastic coating. Bull nose at each end so wires can be pulled from either direction. 25' & 40' models contained in PVC storage case. 100' model comes in steel cage with hand operated brake.

P/N 1753 - 25' FiberSnake

P/N 1754 - 40' FiberSnake

P/N 1755 - 100' FiberSnake

**The Ultimate Tool Bag** features large, secure outer pockets and ample storage inside with a removable inner tote to hold smaller tools & keep them handy on the job site. The inside compartment also contains additional large pockets for tools and testers. The bag includes a Plano® tackle box to store dies, blades, connectors, etc. so you can customize it to work for you. Detachable shoulder strap & web handle for added convenience.

P/N 4923



# Kits



**Ultimate Technician Tool Kit** - be completely ready with our newest tool kit for data, voice & video installation and maintenance! It includes all necessary cable preparation tools & continuity testers for Cat5, Cat5e, Cat6 as well as RG6 & RG6 Quad in our new Ultimate Tool Bag.

P/N 4932

**Premise Service Kit** provides everything for twisted pair and coaxial LAN installation including our 8000 Series ergonomic crimper & 3 dies, SurePunch® PDT, Data SureStrip®, LAN ProNavigator® and more!

P/N 4933 Ultimate Premise Service Kit - WE/SS; 110 & 66

P/N 901039 Premise Service Kit - WE/SS; 110 & 66

P/N 9010391 Premise Service Kit - AMP; 110 & Krone

P/N 9010392 Premise Service Kit - AMP; 110 & BIX



901039

4933

**DataReady® PRO Kit** is one of our most popular kits! It is a complete data cable installation kit providing everything to support the installer using commonly-available connectors and punchdown termination blocks.



901378

4934



- P/N 4934 DataReady® PRO Kit - WE/SS & AMP; 110 & 66
- P/N 901378 DataReady® PRO Kit - WE/SS & AMP; 110 & 66
- P/N 9013781 DataReady® PRO Kit - WE/SS & AMP; 110 & Krone
- P/N 9013782 DataReady® PRO Kit - WE/SS & AMP; 110 & BIX

**New**



901053

Our popular **DataReady® Kit** has been upgraded to better serve today's datacomm and IT needs. This Cat5/Cat5e datacomm installation kit contains a cutter/stripper, SurePunch punchdown tool, All-in-One ratcheted crimper and Data Link/ID and Cable-Check™ tester.

- P/N 901053 DataReady® Kit - WE/SS; 110 & 66
- P/N 9010531 DataReady® Kit - AMP; 110 & Krone
- P/N 9010532 DataReady® Kit - AMP; 110 & BIX

**Basic LAN Tool Kit** is convenient and perfect for small offices or for students just starting out. It includes the essential tools needed to maintain your network or to make quick repairs.

P/N 4929

**New**



**SealTite™ Pro A/V Kit for the Smart Home**

**New**

The new SealTite Pro A/V kit is all you need to make custom-length digital and analog audio and component video cables using compression RCA, BNC and cable TV "F" connectors. It includes SealTite Pro Crimper, SureStrip™ combination coax and UTP cutter/stripper along with 6 bonus RG6/RG6 Quad connectors. 2 each: "F", RCA, BNC and two sets of red, yellow and white color bands to use with the RCA's and BNC's.

P/N 4915



Visit our website for a complete listing of our tool kits.  
[www.paladin-tools.com](http://www.paladin-tools.com)

# Connectors and Accessories

**New**

We now offer a full-line of modular plug connectors and coaxial cable connectors. The SealTite® line of compression connectors has been broadened to include RCA and BNC along with the cable TV "F"-style. Connectors are available in convenient retail packs of 10, 50 or larger bulk quantities. Visit our website for a complete listing of connectors available.

## Modular Plugs

RJ45



RJ11



	Connector Style	Cable Type	10 Pack Clamshell	50 Pack Clamshell
	RJ45	Cat5e, solid or stranded – Round, flat or oval	9546	9655
	RJ11	Solid or stranded – Round, flat or oval	9520	9654

## Sealtite® Compression Connectors

Quickly and easily make connections using compression connectors. SealTite® connectors feature a patented design with 360° cable gripping sleeve and watertight "O-ring". Solid brass with nickel plating. RCA and BNC connectors have full gold contacts for low signal loss and include slip-on color bands for easy cable identification.

	Connector Style	Cable Type	10 Pack Clamshell	50 Pack Jar
	Cable TV "F"	RG59	9642	9645
		RG6 & RG6 Quad	9643	9646
		RG6 Quad	9644	9647
	BNC	RG59	9648	9664
		RG6 & RG6 Quad	9652	9665
	RCA	RG59	9653	9662
		RG6 & RG6 Quad	9649	9663

**New**

**New**






Push-On

New

## Hex-Crimp, Push-On and Twist-On Cable TV "F" Connectors

Make cable TV cords for indoor usage using standard **Hex-Crimp** or with our new push-on and twist-on connectors that require no crimping tool for termination. **Push-On Cable TV "F" Connectors** feature a special knurled nut for superior grip and strong connection. **Twist-On style** uses sharp threads to firmly grip cable for good connections.

Twist-On

	Connector Style	Cable Type	Crimp Dims	10 Pack Clamshell	50 Pack Clamshell
	Hex-Crimp	RG59	.324"	9676	9703
		RG6	.324"	9677	9680
		RG6 Quad	.360"	9678	9681
	Push-On	RG59		9682	9684*
		RG6		9683	9685*
	Twist-On	RG59		9694	9709
		RG6		9695	9710

\* Denotes 50 pack of connectors packed in jar

Hex-Crimp

New

## Splitters, Diplexer and In-Line Amplifier

Split TV signals out to multiple outlets. Features "F"-style female ports. 75 ohm impedance. Bandwidth: 5-2400 MHz for satellite and 5-1000 MHz for cable TV splitters. All ports on satellite splitters are power passive.

	Satellite	Cable TV
2-Way Splitter	9669	9688
3-Way Splitter	9670	9689
4-Way Splitter	9671	9690

**Satellite Di-Plexer (PN 9673)** combines signals from the satellite dish and UHF/VHF antenna into one coaxial cable output. Diplexed signal can be sent through an **In-Line Amplifier (PN 9672)** to send the signal to multiple outlets.



9673



9672



9669



9688



9670



9689



9671



9690

Paladin Tools®

## **Paladin Tools®**

connectool Inc.  
2559 Turkey Creek Rd.  
Oilville, VA 23129  
U.S.A.

Support **800.272.8665**  
Int'l Phone **001.804.550.1121**

Fax **800.272.5257**  
Int'l Fax **001.804.550.0610**

Website **www.paladin-tools.com**  
Email **paladin@paladin-tools.com**

LIMITED  
**LifeTime**  
WARRANTY

